



**Compi Distributors, Inc.**  
*"Your One Stop Shop"*



12/18/17 through 2/16/18

Saint Louis, Missouri 636.296.1111  
 Springfield, Illinois 217.529.5553  
 Kansas City, Missouri 816.228.9998  
 Ozark, Missouri 417.986.1222  
[www.compidualistributors.com](http://www.compidualistributors.com)



**KNAPE & VOGT.**

### Heavy-Duty, Soft-Close, Undermount Series, 2 Bins

- Heavy-duty, undermount slide with Soft-Close technology; 100 lb. dynamic / 125 lb. static weight capacity
- Installs in minutes using self-aligning brackets secured with only six screws
- Color coordinated aluminum side rails provide stability and conceal slide hardware
- Unique, easy to clean, solid backsplash and floor that prevents debris from falling through to floor or cabinet
- Decorative rail accents can be customized to match countertops or cabinetry
- Bins in Platinum or White



| PART NUMBER     | DESCRIPTION  | PRICE    |
|-----------------|--|----------|
| KV-USC12-2-27WH | 12" wide 27-quart, white finish 2-bin waste & recycling unit.    | \$106.06 |
| KV-USC12-2-27PT | 12" wide 27-quart, platinum finish 2-bin waste & recycling unit. | \$108.55 |
| KV-USC15-2-35WH | 15" wide 35-quart, white finish 2-bin waste & recycling unit.    | \$109.80 |
| KV-USC15-2-35PT | 15" wide 35-quart, platinum finish 2-bin waste & recycling unit. | \$111.04 |
| KV-USC18-2-50WH | 18" wide 50-quart, white finish 2-bin waste & recycling unit.    | \$119.77 |
| KV-USC18-2-50PT | 18" wide 50-quart, platinum finish 2-bin waste & recycling unit. | \$122.27 |



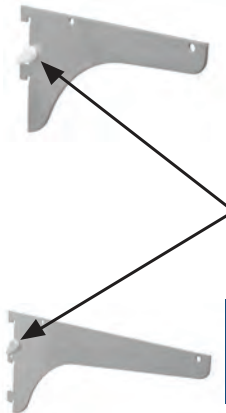
### 87 Series Standard & 186/187 Series Bracket System

- Super-Duty • Up to 1,060 lbs./pair • Single Slot Design • Adjustable in 2" Increments



#### 87 Series Standards

| PART NUMBER  | Size | QTY     |         |
|--------------|------|---------|---------|
|              |      | 1-4     | 5+      |
| KV-87-ANO-24 | 24"  | \$4.93  | \$4.60  |
| KV-87-ANO-36 | 36"  | \$7.40  | \$6.90  |
| KV-87-ANO-48 | 48"  | \$9.88  | \$9.22  |
| KV-87-ANO-60 | 60"  | \$12.25 | \$11.42 |
| KV-87-ANO-72 | 72"  | \$14.70 | \$13.72 |
| KV-87-ANO-84 | 84"  | \$17.21 | \$16.06 |
| KV-87-ANO-96 | 96"  | \$19.74 | \$18.42 |



#### 186 Series Brackets

| PART NUMBER    | Size | QTY    |        |
|----------------|------|--------|--------|
|                |      | 1-9    | 10+    |
| KV186LL-ANO-8  | 8"   | \$3.97 | \$3.71 |
| KV186LL-ANO-10 | 10"  | \$4.19 | \$3.91 |



Unique cam lock lever allows for easy installation while securing bracket to standard.

#### 187 Series Brackets

| PART NUMBER    | Size | QTY    |        |
|----------------|------|--------|--------|
|                |      | 1-9    | 10+    |
| KV187LL-ANO-12 | 12"  | \$5.21 | \$4.86 |
| KV187LL-ANO-14 | 14"  | \$5.63 | \$5.25 |
| KV187LL-ANO-16 | 16"  | \$6.12 | \$5.71 |
| KV187LL-ANO-18 | 18"  | \$6.42 | \$5.99 |
| KV187LL-ANO-20 | 20"  | \$6.98 | \$6.51 |
| KV187LL-ANO-22 | 22"  | \$7.94 | \$7.41 |
| KV187LL-ANO-24 | 24"  | \$9.56 | \$8.92 |

**MIRKA**



### 5" DEROS Orbital Sander

Mirka 5" DEROS 550X CV 125mm Vacuum Orbit 5,0 Case the first ever electric sanding machine with a brushless motor and no external power supply.

PART NUMBER MI-MID55020CAUS  
 PRICE: \$625.00



### 5" Finishing Sander 3/16" Orbit

This general purpose tool is a lightweight sander constructed of precision molded composites for strength and durability, while reducing operator fatigue. Composite construction also reduces sound for increased comfort.

PART NUMBER MI-MR-5 PRICE: \$189.38



### 3" X 4" Air Sander

Perfect for use on flat surfaces, recessed corners, inside of drawer box corners and profiled moldings. It is lightweight and extremely tough.

|                        |  |
|------------------------|--|
| <b>ITEM NUMBER</b>     | <b>DESCRIPTION</b>                               |
| SP-SP340001-1          | 3"x4" Inch Orbital Air Sander<br>10,000 RPM, 3mm |
| <b>PRICE: \$187.69</b> |  |



### 5" Trident

Designed with a durable composite body, lightweight with a compact, recessed throttle lever. It is ergonomically balanced for added comfort and control for the operator.

|                        |                                      |
|------------------------|--------------------------------------|
| <b>ITEM NUMBER</b>     | <b>DESCRIPTION</b>                   |
| SPTS5HL316             | 5" 1200 RPM Random Orbit Sander 3/16 |
| <b>PRICE: \$172.38</b> |                                      |

**We also stock Surfprep abrasives!**



### ALL ROUTER BITS FEATURE:

- High quality long lasting European sub-micrograin & micrograin carbide
- Thick carbide for multiple resharpenings
- Different carbide grades for different materials
- Silver induction brazing for maximum carbide bonding strength
- Produced according to Holz-BG German standards for safety & quality
- Centerless ground shank for exact fit
- Multi axis grinding
- Manufactured in single clamping for superior balance, symmetry, precision & centricity
- Use of only solid bar stock steel (brazed bits)
- Shanks laser etched with size, maximum RPM ratings & clamping depth *\*All router bits are carbide-tipped unless stated otherwise.*



**Solid Carbide Panel Pilot Flush Trim 1/4 Dia x 1/4 x 1/4 Inch Shank 1-Flute**  
The ideal laminate trimming bit for high-volume production. Solid carbide and integral pilot (no bearing to maintain) extend life of bit, slim configuration reduces vibration. Suitable for routers and trimmers.

|                    |                   |
|--------------------|-------------------|
| <b>PART NUMBER</b> | <b>PRICE each</b> |
| AT-51200+          | \$6.60            |



**Solid Carbide Panel Pilot Bevel Trim 7 Degree x 1/4 Dia x 1/4x 1/4 Inch Shank 1-Flute**  
The ideal laminate trimming bit for high-volume production. Solid carbide and integral pilot (no bearing to maintain) extend life of bit, slim configuration reduces vibration. Suitable for routers and trimmers.

|                    |                   |
|--------------------|-------------------|
| <b>PART NUMBER</b> | <b>PRICE each</b> |
| AT-51202+          | \$6.90            |

### Also Features AMAX Extended Life:

- 200% longer life time even when working with abrasive materials
- Superior geometric design
- Advanced grinding technology that improves the carbides' resistance to wear
- Super clean cuts



**Carbide Tipped No-File Trim .059 Radius x 1/2 Dia x 3/8 x 1/4 Inch Shank**  
Eliminate the time-consuming hand-filing that normally follows each trimming cut on a laminate job. Our patented No-File™ bit "breaks" the sharp edge as it trims the laminate flush. When used properly, the resulting edge is smooth and has a slight radius.

|                    |                   |
|--------------------|-------------------|
| <b>PART NUMBER</b> | <b>PRICE each</b> |
| AT-47150+          | \$21.16           |



**Carbide Tipped Flush Trim 1/4 Dia x 1/2 x 1/4 Inch Shank**  
Use this flush trimming bit for laminate work or for template and pattern work. For template application, the bearing follows the template, while the cutting edges trim the workpiece. With the router handheld, the template is on the bottom of the work. With a table-mounted router, the template is on top. A two-flute bit is a good general-purpose choice, providing fast cuts and good finishes. Excellent for template work. 1/4" diameter for closer inside corner cutting only; bearings not guaranteed due to size.

|                    |                   |
|--------------------|-------------------|
| <b>PART NUMBER</b> | <b>PRICE each</b> |
| AT-47090           | \$21.61           |



**Carbide Tipped Flush Trim 1/2 Dia x 1 Inch x 1/4 Shank**  
Use this flush trimming bit for laminate work or for template and pattern work. For template application, the bearing follows the template, while the cutting edges trim the workpiece. With the router handheld, the template is on the bottom of the work. With a table-mounted router, the template is on top. A two-flute bit is a good general-purpose choice, providing fast cuts and good finishes. Excellent for template work.

|                    |                   |
|--------------------|-------------------|
| <b>PART NUMBER</b> | <b>PRICE each</b> |
| AT-47104           | \$12.90           |



## Work Station and Shelf Support Bracket Specs

- A.D.A. brackets for work stations, counter tops and shelves
- Exceeds 1,000 lb. load limit
- 1 1/2" forms with 1/4" mounting holes
- Krinkle powder coat



## Must Purchase in Pairs

| PART NUMBER    | DESCRIPTION                  | OPEN BOX PRICE | FULL BOX PRICE | FULL BOX QTY |
|----------------|------------------------------|----------------|----------------|--------------|
| BR-8x12-BLK-L  | Black 8"x12" Left Bracket    | \$6.38         | \$5.70         | 10           |
| BR-8x12-BLK-R  | Black 8"x12" Right Bracket   |                |                |              |
| BR-8x12-WH-L   | White 8"x12" Left Bracket    |                |                |              |
| BR-8x12-WH-R   | White 8"x12" Right Bracket   |                |                |              |
| BR-12x18-BLK-L | Black 12"x18" Left Bracket   | \$8.40         | \$7.50         | 3            |
| BR-12x18-BLK-R | Black 12"x18" Right Bracket  |                |                |              |
| BR-12x18-WH-L  | Black 12"x18" Left Bracket   |                |                |              |
| BR-12x18-WH-R  | Black 12"x18" Right Bracket  |                |                |              |
| BR-15x21-AL-L  | Almond 15"x21" Left Bracket  | \$9.75         | \$8.71         | 3            |
| BR-15x21-AL-R  | Almond 15"x21" Right Bracket |                |                |              |
| BR-15x21-BLK-L | Black 15"x21" Left Bracket   |                |                |              |
| BR-15x21-BLK-R | Black 15"x21" Right Bracket  |                |                |              |
| BR-15x21-WH-L  | White 15"x21" Left Bracket   |                |                |              |
| BR-15x21-WH-R  | White 15"x21" Right Bracket  |                |                |              |

| PART NUMBER    | DESCRIPTION                  | OPEN BOX PRICE | FULL BOX PRICE | FULL BOX QTY |
|----------------|------------------------------|----------------|----------------|--------------|
| BR-18X18-BLK   | Almond 18"x24" Left Bracket  | \$12.68        | \$11.32        | 6            |
| BR-18X18-WHT   | Almond 18"x24" Right Bracket |                |                |              |
| BR-18X24-AL-L  | Almond 18"x24" Left Bracket  | \$13.65        | \$12.19        | 3            |
| BR-18X24-AL-R  | Almond 18"x24" Right Bracket |                |                |              |
| BR-18X24-BLK-L | Black 18"x24" Left Bracket   |                |                |              |
| BR-18X24-BLK-R | Black 18"x24" Right Bracket  |                |                |              |
| BR-18X24-WH-L  | White 18"x24" Left Bracket   |                |                |              |
| BR-18X24-WH-R  | White 18"x24" Right Bracket  |                |                |              |
| BR-24X24-BLK-L | Black 24"x24"                | \$18.38        | \$16.42        | 6            |
| BR-24X24-WH-R  | White 24"x24"                |                |                |              |
| BR-24X29-BLK-L | Black 24"x29" Left Bracket   | \$21.75        | \$19.43        | 3            |
| BR-24X29-BLK-R | Black 24"x29" Right Bracket  |                |                |              |
| BR-24X29-WH-L  | White 24"x29" Left Bracket   |                |                |              |
| BR-24X29-WH-R  | White 24"x29" Right Bracket  |                |                |              |



## Face Frame Flat Pan Head Square Drive Screws

| PART NUMBER      | THREAD TYPE   | SIZE        | OPEN BOX PRICE per 1000 | FULL BOX PRICE per 1000 | FULL BOX QTY |
|------------------|---------------|-------------|-------------------------|-------------------------|--------------|
| SG-11/4C-FRAMEPN | Coarse        | #7 x 1 1/4" | \$13.24                 | \$11.44                 | 7500         |
| SG-11/4-FRAMEPN  | HI-LO Type 17 | #7 x 1 1/4" | \$12.04                 | \$10.50                 | 7500         |
| SG-11/2C-FRAMEPN | Coarse        | #7 x 1 1/2" | \$14.91                 | \$12.89                 | 6000         |
| SG-11/2-FRAMEPN  | HI-LO         | #7 x 1 1/2" | \$13.89                 | \$12.01                 | 6000         |



## Face Frame Round Washer Head Screws

| PART NUMBER       | THREAD TYPE | SIZE        | OPEN BOX PRICE per 1000 | FULL BOX PRICE per 1000 | FULL BOX QTY |
|-------------------|-------------|-------------|-------------------------|-------------------------|--------------|
| SG-11/4-FRAMERWH  | Coarse      | #8 x 1 1/4" | \$15.15                 | \$13.10                 | 6000         |
| SG-11/4R-FRAMERWH | Fine        | #7 x 1 1/4" | \$15.55                 | \$13.44                 | 8000         |
| SG-11/2-FRAMERWH  | Coarse      | #8 x 1 1/2" | \$17.55                 | \$15.17                 | 5000         |

Stock Up & **SAVE!**



## Drive Bits

| PART NUMBER | DRIVE TYPE   | SIZE    | PRICE each |
|-------------|--------------|---------|------------|
| SG-SQ2-1    | Square Drive | #2 x 1" | \$0.70     |
| SG-SQ2-6    | Square Drive | #2 x 6" | \$1.39     |



## Hex Head Draw Bolts

| PART NUMBER | TYPE      | SIZE           | FINISH | OPEN BOX PRICE each | FULL BOX PRICE each | FULL BOX QTY |
|-------------|-----------|----------------|--------|---------------------|---------------------|--------------|
| DR_LOCK_UP  | Draw Bolt | 1/4-20 x 3-1/2 | Zinc   | \$0.19              | \$0.125             | 500          |

# CHEMETAL®

## Introducing Glowing Metals.

# NEW DESIGNS



Warmer, richer, more energetic metal designs and laminates. It's our largest new material introduction ever.



#901-T  
Polished Aluminum Triangles



#903-T  
Polished Brass Triangles



#943-T  
Polished Bronze Triangles



#901-D  
Polished Aluminum Dome



#903-D  
Polished Brass Dome



#943-D  
Polished Bronze Dome



#158  
Kauai Gloss Magnetic Dry Erase



#236  
Metawave Bronze Aluminum



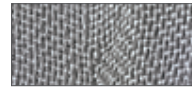
#237  
Metawave Black Aluminum



#254  
Hammered Bronze Aluminum



#255  
Hammered Slate Aluminum



#275  
Vintage Mesh Aluminum



#303  
Aged Copper



#304  
Aged Copper Dark



#305  
Antique Brushed Brass Dark



#306  
Brass Jellyfish



#335  
Seurat



#611  
Philosophy Aluminum



#612  
Chronometer Aluminum



#613  
Ember Aluminum



#614  
Beowulf Aluminum



#615  
Cement Aluminum



#616  
Brass Etch Aluminum



#617  
Steel Etch Aluminum



#618  
Black and Tan Aluminum



#707  
Cross Brush Aluminum



#717  
Black Brushed Aluminum



#724  
Champagne Brushed Aluminum



#933  
Rose Gold Aluminum



#934  
Light Bronze Aluminum



#935  
Dark Bronze Aluminum



#936  
Champagne Brass Aluminum



#937  
Antique Copper Aluminum



#943  
Polished Bronze Aluminum



#944  
Glowing Bronze Aluminum



#950  
Brushed Blued Aluminum

tresco lighting



**BLOWOUT SALE**  
WHILE SUPPLIES LAST

White 35.5" Trescent Fixture L3 T5 Cool White

PART NUMBER  
TL-TRS521W904CW9

**\$13.89**  
EACH

**CDI**  
"Your One Stop Shop"

Saint Louis, MO. 636.296.1111

Springfield, IL. 217.529.5553

Kansas City, MO. 816.228.9998

Ozark, MO. 417.986.1222

www.compdistributors.com